



SK-430M6 SK-435M6 SK-440M6 SK-445M6
SK-450M6 SK-455M6 SK-460M6

MONO HALF -CELL 9BB

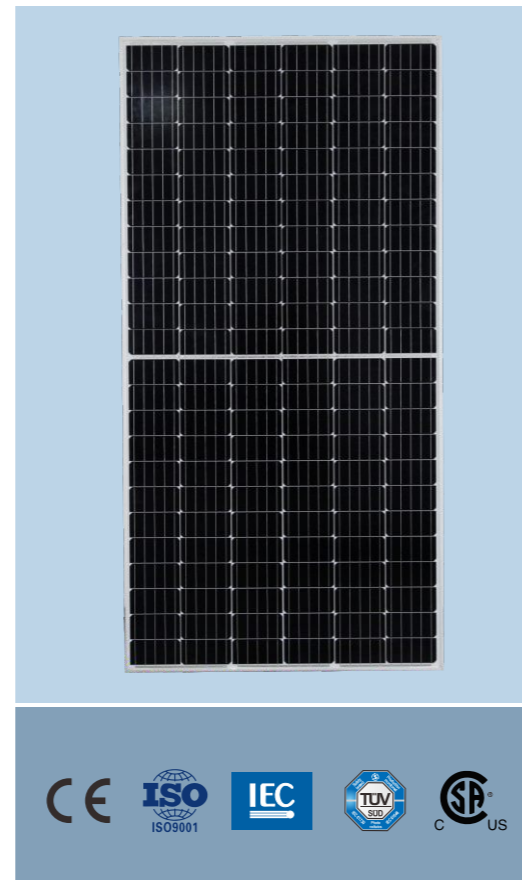
Representation	Model	Half-Cell	Solar Cell Type	Wattage	Silicon Type
EXAMPLE	SK-M6-144	144 PCS	166 × 166 mm	460W	M:Monocrystalline

Features

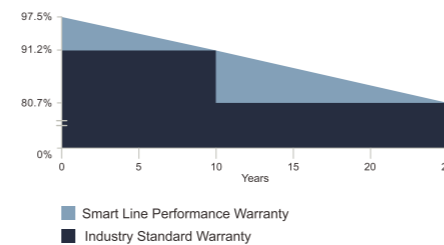
- **Tempered and high transparent low-iron glass**
directs more light on the solar cells, resulting in a higher energy yield.
- **Excellent low-light performance**
produces energy even at low light levels, especially in the morning, evening and winter season.
- **Special and advanced module sealing technology**
to avoid leakage and frame deformation.
- **Well-suited module size**
for almost all PV applications.
- **Durable PV modules**
can be used for harsh environmental conditions, such as exposure to salt mist, and known potential induced degradation risk factors.



Warning: Read the Installation and User Manual in its entirety before handling, installing, and operation smart Solar modules.



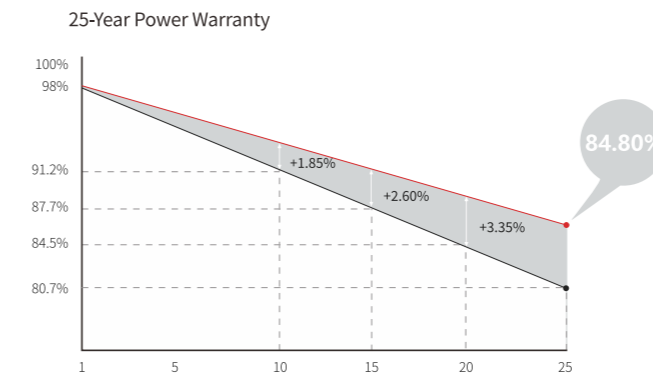
Module Warranty



25-year limited warranty of 80% power output;
 12-year limited warranty of 90% power output;
 5-year limited warranty of materials and workmanship.

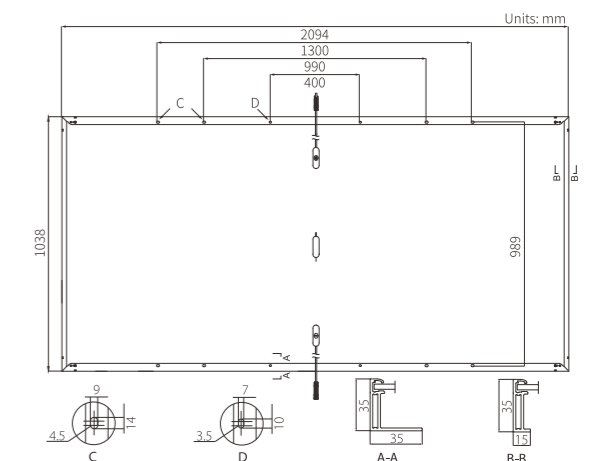
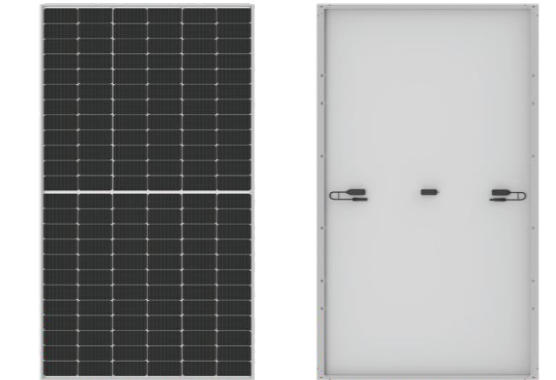
21.2% MAX MODULE EFFICIENCY
0~+5W POWER TOLERANCE
<2% FIRST YEAR POWER DEGRADATION
0.55% YEAR 2-25 POWER DEGRADATION
HALF-CELL Lower operating temperature

Additional Value



Mechanical Parameters

Cell Orientation	144 (6 × 24)
Junction Box	IP68, three diodes
Output Cable	4mm ² , positive 400 / negative 200mm length can be customized
Glass	Single glass, 3.2mm coated tempered glass
Frame	Anodized aluminum alloy frame
Weight	23.3kg
Dimension	2094 × 1038 × 35mm
Packaging	30pcs per pallet / 150pcs per 20' GP / 660pcs per 40' HC



Electrical Characteristics

	STC: AM1.5	1000W/m ²	25°C	Test uncertainty for Pmax: ±3%			
Power Class	430	435	440	445	450	455	460
Maximum Power (Pmax/W)	430	435	440	445	450	455	460
Open Circuit Voltage (Voc/V)	48.5	48.7	48.9	49.1	49.3	49.5	49.7
Short Circuit Current (Isc/A)	11.31	11.39	11.46	11.53	11.60	11.66	11.73
Voltage at Maximum Power (Vmp/V)	40.7	40.9	41.1	41.3	41.5	41.7	41.9
Current at Maximum Power (Imp/A)	10.57	10.64	10.71	10.78	10.85	10.92	10.98
Module Efficiency(%)	19.8	20.0	20.2	20.5	20.7	20.9	21.2

Operating Parameters

Operational Temperature	-40°C ~ +85°C
Power Output Tolerance	0 ~ +5 W
Voc and Isc Tolerance	±3%
Maximum System Voltage	DC1500V (IEC/UL)
Maximum Series Fuse Rating	20A
Nominal Operating Cell Temperature	45 ± 2°C
Protection Class	Class II
Fire Rating	UL type 1 or 2

Mechanical Loading

Front Side Maximum Static Loading	5400Pa
Rear Side Maximum Static Loading	2400Pa
Hailstone Test	25mm Hailstone at the speed of 23m/s

Temperature Ratings (STC)

Temperature Coefficient of Isc	+0.048%/°C
Temperature Coefficient of Voc	-0.270%/°C
Temperature Coefficient of Pmax	-0.350%/°C